

CERTIFICATE OF LOCATION OF GOVERNMENT CORNER

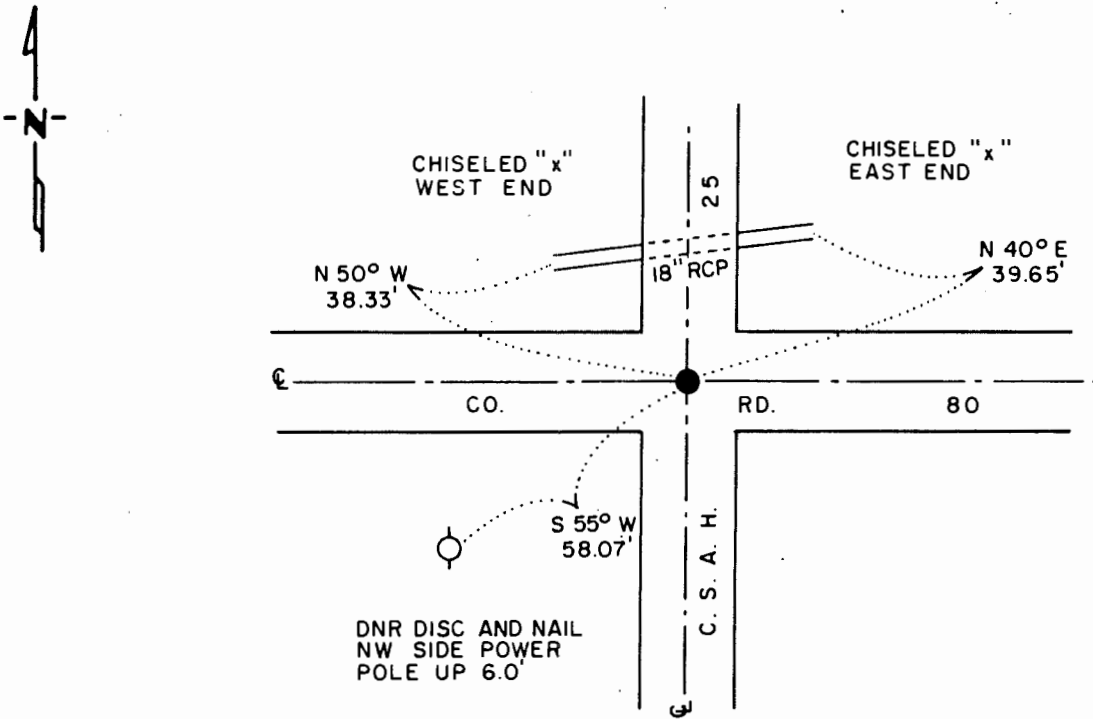
NORTHEAST Corner of Section 17, Township 108 N., Range 43 W., 5th P.M.

STATE OF MINNESOTA, County of MURRAY

At the corner location shown on the sketch:

- On 5-14-86 found a 6" DIA. CONCRETE MONUMENT, DOWN 20"
DATE
- left monument as found, lowered monument, removed monument (explain)
- On 5-14-86 placed a 1 1/4" x 1 1/4" x 16" PERFORATED STEEL TUBE WITH
DATE
ALUMINUM CAP STAMPED "DNR SURVEY MARKER", DOWN 0.3'

SKETCH OF REFERENCE TIES



BEARINGS OBSERVED WITH COMPASS

Statement of evidence relative to this corner location is on back of page.

J.A.G. 6-30-86
FILE G-383

I hereby certify that this document and the data contained herein was prepared by me or under my direct supervision.

Lowell R. Pomeroy, Jr. 8-21-86
SIGNATURE DATE

Registration No. 17005

- Land Surveyor, Professional Engineer
- County Surveyor, County Engineer

OFFICE OF THE COUNTY RECORDER

County of _____

I hereby certify that this document was filed in the Co. Recorders office at _____ .M. on the _____ day of _____ A.D., 19__

County Recorder _____

By _____, Deputy

DOCUMENT NO. _____

Northeast Corner Section 17, Township 108 North, Range 43 West

This corner was originally established by the U. S. General Land Office survey in 1866. The government notes show corner marked with a wood post set in mound of earth with pits and trench dug around the mound.

In May 1986, the DNR Bureau of Engineering contacted the Murray County Offices of the Recorder and Highway Engineer for corner information.

The following information was obtained from the County Recorder's Office.

Surveyor's Record Book, on page 208, contains a survey by J. W. Woolstencroft, dated November 14, 1907. Survey states corner is a government corner, which measures 2633 ft. from the east quarter corner Section 17. No mention is made as to what was found or set at this corner.

Surveyor's Record Book, on page 207, contains a survey of Section 9 by J. W. Woolstencroft, dated November 21, 1908. Survey states all corners were established. Corner measures:

2633 ft. from the north quarter corner Section 16

2649 ft. from the east quarter corner Section 8

No mention is made as to what was found or set at this corner.

The above information is also contained in the County Highway Engineer's Office.

The following information was obtained from the County Highway Engineer's Office:

Surveyor's Record Book contains a survey of Section 16 by J. W.

Woolstencroft, dated November 21, 1908 and June 25, 1925. Survey states all corners were established except the southeast corner. Corner measures:

2638 ft. from the north quarter corner Section 16

2649 ft. from the east quarter corner Section 17

No mention is made as to what was found or set at this corner.

Surveyor's Record Book contains ties to government corners in Section 8, by F. A. March, dated 1940. Corner is shown as a concrete stone with ties:

R. P. tack in corner fence post N.E. 46.8 ft.

R. P. tack in corner fence S.E. 45.1 ft.

A government corner tie sheet shows this corner as a concrete monument and 3/4" iron pin in C.S.A.H. 25 and C.A.R.80. Ties above are shown and additional ones are:

Pin "X" concrete apron N.W. 39.98 ft.

Pin - N & C, power pole, S.W. 58.98 ft.

On May 14, 1986, the DNR Bureau of Engineering hired a backhoe operated by Buffalo Ridge Plumbing and Heating of Ruthton to dig for evidence of this corner. Dug a 2-ft. east-west by 8-ft. north-south hole. The center at intersection of roads north-south and east-west. Encountered an old road bed down 18" and found a 6" diameter concrete monument with "X" on top down 20". Left monument as found and set a 3/4" by 10" rebar on its east side. Corner measures:

2644.62 ft. from the north quarter corner Section 16

2650.48 ft. from the east quarter corner Section 8

Accept the concrete monument as the location of the corner.

Traverse information is available from the DNR Bureau of Engineering.